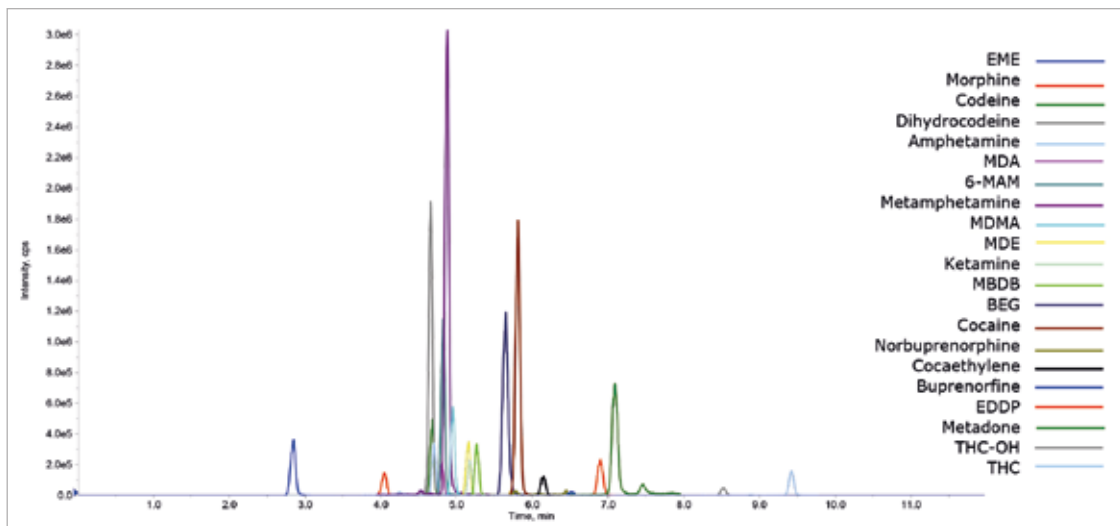


## SHORT METHOD DESCRIPTION

### FloMass® Drugs of Abuse in Hair

Our panel of drug of abuse in urine includes: Amphetamine, Methamphetamine, MDA, MDE, MDMA, MBDB, Cocaine, Benzoylecgonine, Ecgoninmethylester, Coca ethylene, Morphine, 6-MAM, Codeine, Dihydrocodeine, 11-OH-THC, THC, Methadone, EDDP, Buprenorphine, Norbuprenorphine, Ketamine.



### Performance

Analyte	Linearity (ng/mL)	LLOD (ng/mL)	LLOQ (ng/mL)	Analyte	Linearity (ng/mL)	LLOD (ng/mL)	LLOQ (ng/mL)
Amphetamine	5.21 - 10000	1.56	5.21	Codeine	0.794 - 20000	0.238	0.794
Methamphetamine	1.75 - 10000	0.525	1.75	Dihydrocodeine	0.750 - 20000	0.225	0.750
MDA	2.02 - 10000	0.605	2.02	6-MAM	1.40 - 20000	0.420	1.40
MDE	3.35 - 10000	1.01	3.35	THC	0.581 - 2500	0.174	0.581
MDMA	0.621 - 10000	0.186	0.621	THC-OH	1.57 - 2500	0.473	1.57
MBDB	0.646 - 10000	0.194	0.646	Methadone	3.20 - 10000	0.961	3.20
Cocaine	0.604 - 25000	0.181	0.604	EDDP	0.218 - 2500	0.065	0.218
BEG	0.161 - 2500	0.048	0.161	Buprenorphine	0.419 - 1000	0.126	0.419
EME	0.094 - 2500	0.028	0.094	Norbuprenorphine	1.51 - 1000	0.454	1.51
Cocaethylene	0.228 - 2500	0.068	0.228	Ketamine	1.96 - 10000	0.588	1.96
Morphine	0.682 - 20000	0.204	0.682				

# ORDERING GUIDE

Order No.	Description	Quantity
<b>EUM20100</b>	<b>FloMass® Drug of Abuse in Hair</b> (Amphetamine, Methamphetamine, MDA, MDE, MDMA, MBDB, BEG, Cocaine, EME, Cocaethylene, Morphine, Codeine, Dihydrocodeine, 6-MAM, THC, 11-OH-THC, Methadone, EDDP, Buprenorphine, Norbuprenorphine, Ketamina) LC-MS/MS detection	<b>100 assays</b>
	<b>Contents</b>	
	Mobile Phase A	1 x EUM02011
	Mobile Phase B	1 x EUM02012
	Mobile Phase C	1 x EUM02013
	Wash Solution	1 x EUM20021
	Reconstituting Solution	1 x EUM20022
	Extracting Solution	1 x EUM20023
	Diluting Solution	1 x EUM20024
	Internal Standard Mix	1 x EUM20031
	<b>Separately available components</b>	
EUM02011	Mobile Phase A	600 ml
EUM02012	Mobile Phase B	500 ml
EUM02013	Mobile Phase C	500 ml
EUM20021	Wash Solution	440 ml
EUM20022	Reconstituting Solution	440 ml
EUM20023	Extracting Solution	45 ml
EUM20024	Diluting Solution	20 ml
EUM20031	Internal Standard Mix	4.5 ml
	<b>Accessory</b>	
EUM00C02	Analytical Column with test chromatogram	1 pc
EUM00A04	Precolumns	4 pcs
EUM00A05	Holder (incl. 1 precolumn)	1 pc
EUM02071	FloTuning Mix A + Mix B DOA	2x2 ml
EUM20051	Control Set for Drug of Abuse in Whole Blood, lyoph. (2 levels)	3x2x0.4 ml
EUM20041	Calibrator Set for Drug of Abuse in Urine, lyoph. (6 levels)	3x6x0.4 ml

## HPLC-MS/MS system conditions

**Ionization:** ESI positive mode

**MS/MS:** specific MRM

**Injection volume:** 15 µl (variable according to instrumental sensitivity)

**Running time:** 12 min

**Column heater:** 40°C